

Can I control IntesisHome with Google Assistant?

Can I control IntesisHome with Google Assistant?

The IntesisHome – Google Assistant integration allows you to control your IntesisHome devices through voice commands. It also makes IntesisHome devices part of your Google Home system, which leads to many useful and different ways to interact with your home.

In order to start the linking process between IntesisHome and Google Assistant, you will need the following:

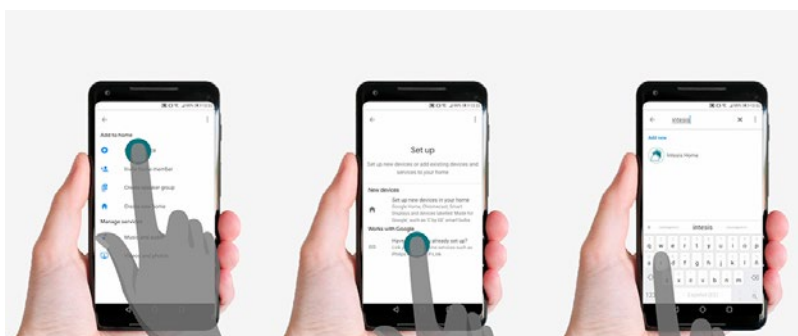
- An IntesisHome account with, at least, one registered device.
- A Google account.

You will also need a smartphone with the Google Home app (which you can download on the Google play store or on the Apple store).

To control your AC units using the IntesisHome skill, you will need a Google Assistant-compatible device (Google Home, Google Home mini, Smartphone with Google Assistant app...).

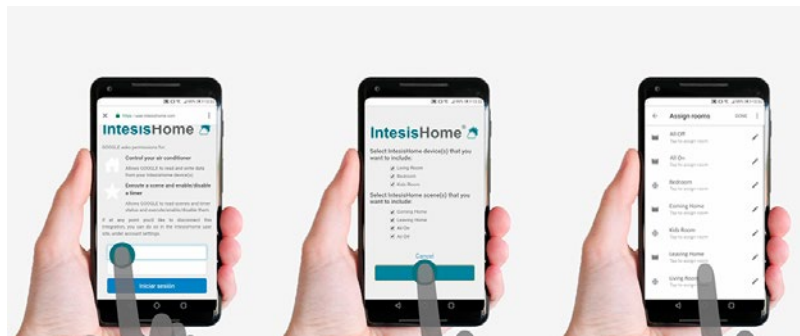
Once you are ready, you can begin the linking process by opening the Google Home application on your phone. Log in with your Google account and follow the steps until the following screen appears:

1. To start the process click on the “Add” button.
2. Select “Set up device” option, and in the next screen tap on “Works with Google”.
3. Look for the IntesisHome service by pressing on the lens appearing on the top-right corner.



Can I control IntesisHome with Google Assistant?

4. An IntesisHome webpage will then appear, asking you to log in. Once logged in, you will be able to select what devices and scenes you want to control using Google Home.
5. Select those and leave the others unmarked, then press Continue.
6. It will then start a short process of linking which will lead you to a screen where you can assign your devices and scenes to any room you have created using the Google Home app.



Watch the video guide and follow the step-by-step instructions



Explore and discover all that Google Home has to offer along with the IntesisHome service!

